

# 2016-17 ANNUAL REPORT



The twelfth report of the  
Tasmanian Electoral Commission

Tasmanian Electoral Commission

Annual Report 2016-17

ISSN 1834-2981

Printed by Mercury Walch

Photography by Alastair Bett Photography

Layout by Wendy Polzin

This report can be downloaded in pdf format at [www.tec.tas.gov.au](http://www.tec.tas.gov.au)

Level 3  
169 Main Road  
Moonah Tasmania 7009  
PO Box 307  
Moonah Tas 7009  
Phone (03) 6208 8700  
Fax (03) 6208 8791  
[ballot.box@tec.tas.gov.au](mailto:ballot.box@tec.tas.gov.au)  
[www.tec.tas.gov.au](http://www.tec.tas.gov.au)

Twelfth Annual Report 2016-17

To The Honourable Jim Wilkinson,  
President of the Legislative Council  
  
and  
  
The Honourable Mark Shelton,  
Speaker of the House of Assembly

We have the honour to submit the twelfth report of the Tasmanian Electoral Commission for presentation to the Parliament pursuant to the provisions of section 13 of the *Electoral Act 2004*.

The report covers the period from 1 July 2016 to 30 June 2017.

Yours sincerely



Mike Blake  
CHAIRPERSON



Andrew Hawkey  
ELECTORAL  
COMMISSIONER



Karen Frost  
MEMBER

28 February 2018







# Contents

03

## Chairperson's Introduction

04

## Electoral Commissioner's Review

06

## Functions and Powers

11

## Significant Events of 2016-17

- 12 Change of TEC Membership
- 16 Appointment of New Deputy Electoral Commissioner
- 18 Legislative Council Electoral Boundaries Redistribution
- 20 2017 Legislative Council Elections
- 22 Party Register
- 23 Recounts + By-elections
- 24 New Offices for the TEC
- 25 Organisational Review

29

## Innovations 2016-17

- 30 New Satellite Election Office Structure
- 34 eLearning for Polling Staff
- 35 Postal Vote Management System to go Online
- 36 Redistribution Website
- 37 Utilising Email for Hiring Election Casual Staff and Premises
- 38 Extending the Electronic Roll to Non-Statutory Elections

41

## Report on Performance

47

## Financial Performance

51

## Appendices

- 52 Appointments, Determinations, Approvals + Terminations
- 54 Legislative Council Elections
- 63 House of Assembly Recount
- 64 New Legislative Council Electoral Boundaries
- 66 New Organisational Structure

# The Tasmanian Electoral Commission

**THE COMMISSION COMPRISES THE CHAIRPERSON, THE ELECTORAL COMMISSIONER AND ONE OTHER MEMBER.**

Mike Blake  
CHAIRPERSON



Andrew Hawkey  
ELECTORAL  
COMMISSIONER



Karen Frost  
MEMBER





# Chairperson's Introduction

When Karen Frost and I took up our positions on the Tasmanian Electoral Commission (TEC) on 30 November 2016, little did we know what we had in store over the next eight or so months. However, thorough induction and subsequent briefings by Electoral Commissioner Andrew Hawkey and his team quickly brought us up to date and prepared us for what was to come.

Contributing to our work this year was the solid platform left behind by previous Commission Members Liz Gillam and Christine Fraser. My thanks for their work in past years and in the first five months of the current financial period especially as this related to the manner in which they, along with Andrew, addressed an organisational review, which concluded on 30 September, and the Commission's responses to the Legislative Council Government Administration Committee B's final report on TEC related matters dated 22 April 2016. Where relevant, this Committee's and the organisational review, while not connected, provided Karen and I with a sound introduction and understanding of the activities of the Commission and laying the ground work for the years ahead.

Redistribution of the Legislative Council electoral boundaries during this financial year, followed closely by the transition determination, added significantly to the Commission's work load in particular as a result of the hearings in multiple locations that needed to be arranged and reports prepared. We owe a debt of gratitude to members of the Redistribution Committee and to the staff that supported them. Their effective research led to a soundly-based initial proposal and, ultimately, to final redistribution and transition arrangements that were concluded early in the 2017-18 period. Thank you all.

My thanks also to the many individuals and organisations that responded to the electoral boundaries redistribution process and who attended associated hearings demonstrating the effectiveness of Tasmania's democratic process.

While all of the above was going on, Andrew and his team dealt with routine activities of holding elections, in particular Legislative Council elections on 6 May, updating policy documentation, responding to political processes, engaging new staff and more. My thanks to you all and also to Karen Frost for her strong contribution and support in this period.

**Mike Blake**

CHAIRPERSON  
TASMANIAN ELECTORAL COMMISSION

# Electoral Commissioner's Review





2016-17 has been a year of significant change and constant challenges for the TEC. It is a year that has seen new Commission members, a new Deputy Electoral Commissioner, a change of location and an organisational review. We farewelled one long standing staff member and welcomed six more.

The year saw many staff take on new roles and different processes as new staffing structures, both within the office and for our newly recruited returning officers in the field were implemented. The staff's ability to handle change and use that change as an opportunity to improve processes is exemplified by the extraordinary work by the operations and IT areas as shown in the Innovations section of this report. In addition, the conducting of a Legislative Council electoral boundaries redistribution ensured that the new Commission members hit the ground running and drew heavily on the high level professional support of the policy and communications areas.

The unyielding pace of electoral events over this period – some expected, some unexpected – has challenged and stretched us all. Yet I am appreciative and heartened at the resolute professionalism, positivity, flexibility and comradery of all at the TEC in taking on the challenges of 2016-17.

The following pages provide an insight into the administrative responsibilities and the excellent innovations undertaken by the staff in this office over the financial year. As all in leadership know, while those at the top can look to establish appropriate workplace practices and culture, the effectiveness of any organisation lies in the hands and minds of the staff, especially those closest to the coal face. The hard work and collegial support of the staff has not only enabled the TEC to achieve many things in 2016-17, but has placed the office in good stead for the electoral events soon to come.

## Andrew Hawkey

Electoral Commissioner

# About this Report

This 12th Annual Report of the Tasmanian Electoral Commission (the Commission) covers the period 1 July 2016 to 30 June 2017. It is submitted pursuant to section 13 of the Tasmanian *Electoral Act 2004*.

Separate election reports, including full statistical details of elections, will continue to be submitted. Special reports on electoral issues may also be submitted from time to time.

Although the Commission is a statutory body, corporate support is provided by the Department of Justice and full financial and staffing reports are included in the Department of Justice Annual Report.

# About the Tasmanian Electoral Commission

## FUNCTIONS AND POWERS

The following functions and powers of the Commission are specified in section 9 of the Act.

- (1) In addition to the functions conferred on it by any other provisions of this Act or any other Act, the Commission has the following functions:
  - (a) to advise the Minister on matters relating to elections;
  - (b) to consider and report to the Minister on matters referred to it by the Minister;
  - (c) to promote public awareness of electoral and parliamentary topics by means of educational and information programs and by other means;
  - (d) to provide information and advice on electoral issues to the Parliament, the Government, Government departments and State authorities, within the meaning of the *State Service Act 2000*;
  - (e) to publish material on matters relating to its functions;
  - (f) to investigate and prosecute illegal practices under this Act.
- (2) The Commission may do all things necessary or convenient to be done, including employing persons, for or in connection with or incidental to the performance of its functions.
- (3) Without limiting subsection (2) and in addition to any power conferred on the Commission by any other provision of this Act or any other Act, the Commission, in addition to conducting Assembly elections or Council elections may conduct ballots or elections for a person or organisation and may charge fees for that service.



## RESPONSIBILITIES OF THE COMMISSION AND COMMISSIONER

The Commission, and the Electoral Commissioner, have statutory responsibilities for the independent and impartial conduct of Tasmanian elections and referendums.

The Commission and the Australian Electoral Commission (AEC) jointly manage and maintain the electoral rolls for federal, state and local government elections.

The Electoral Commissioner is a member of the Electoral Council of Australia and New Zealand.

## APPROVALS, APPOINTMENTS AND DETERMINATIONS

The Act provides for a range of approvals, appointments and determinations to be made by the Commission, the Electoral Commissioner or returning officers.

The Commission met three times during the year. A list of all Commission approvals, appointments and determinations made between 1 July 2016 and 30 June 2017 is shown in Appendix A. These approvals, appointments and determinations are available for public inspection at the office of the Commission and are available on the TEC website.

## LEGISLATION

The Commission and the Electoral Commissioner have legal responsibilities under the following legislation:

- *Electoral Act 2004*
- *Electoral Regulations 2005*
- *Local Government Act 1993*
- *Local Government (General) Regulations 2015*
- *Juries Act 2003*
- *Legislative Council Electoral Boundaries Act 1995*
- *Aboriginal Lands Act 1995*
- *Water Management Act 1999*



## ELECTORAL ENROLMENT

An up-to-date and accurate electoral roll is an essential prerequisite for the conduct of elections. The State of Tasmania and the Commonwealth of Australia have an arrangement for the management and maintenance of a joint Tasmanian roll.

Under section 40 of the *Electoral Act 2004*, the Tasmanian roll is provided to Members of Parliament, registered parties and other organisations approved by the Commission.

Eligible Tasmanians are able to enrol to vote in federal, state or local government elections, or change their details on the electoral roll, by completing a single joint enrolment form.

All electors enrolled on the State roll are entitled to vote at the local government elections for the municipal area in which their enrolled address is situated. Other individuals who are over the age of 18 and are owners or occupiers of land in the municipal area may be entitled to be on a supplementary electoral roll kept by the council's General Manager.



## ENROLMENT MANAGEMENT

The national roll is jointly managed by the AEC and State electoral authorities. The Electoral Commissioner represents the TEC at regular meetings of the Electoral Council of Australia and New Zealand which regularly discusses strategies for maintenance of the electoral roll.

At year's end, Tasmanian enrolment stood at 375 444, or an estimated 95.9% of the eligible population. This rate was third highest of the eight Australian jurisdictions and compares to a national rate of 95.1%.





Dunalley Community Hall polling place





# Significant Events of 2016-17

# Change of TEC Membership



This financial year saw the completion of the seven year terms for the Commission Chair, Liz Gillam and the Commission Member, Christine Fraser. In July 2016, the Department of Justice called for expressions of interest for serving in these positions.

On 29 November 2016, the Attorney-General, Vanessa Goodwin announced that Her Excellency Professor the Honourable Kate Warner, AM, Governor of Tasmania had appointed Mike Blake as the new Chair and Karen Frost as the new Member of the Commission, in accordance with the *Electoral Act 2004*.

Mike Blake had previously served as Auditor-General of Tasmania from 2004 to 2016. Karen Frost, based in the north of the state, is a CPA Australia fellow and has a Masters of Business Administration. Karen also has extensive experience in the community sector and as a polling official in Tasmanian elections.

The first meeting of the new membership occurred on 20 December 2016. This was quickly followed early in the new calendar year by Redistribution Tribunal responsibilities for the 2016/17 Redistribution of the Legislative Council electoral boundaries.



○ Liz Gillam



○ Christine Fraser

With the changing of the guard, it is timely to recognise Liz and Christine's contributions and the electoral achievements that have occurred during their time on the Commission.

Liz has been a vital part of the Commission since its establishment in 2005 – originally as the Commission Member and then as Chair.

During her time as Member, the Commission:

- undertook the major task of establishing the many approved processes required by the new Electoral Act,
- introduced elector cards to Legislative Council elections and
- developed and introduced VI-Vote for all Parliamentary elections.

This period included the 2006 House of Assembly elections and the 2008 Legislative Council electoral boundaries redistribution.

Following the resignation of the inaugural Commission Chair, Richard Bingham, in 2009 to take up an interstate position, Liz was appointed Chair and Christine appointed as Member.

In the last seven years, there have been many changes to the Tasmanian electoral landscape.

The 2010 state election was the last for the inaugural Electoral Commissioner, Bruce Taylor, which included the following national innovations:

- electronic certified lists,
- the change from absent to out-of-division voting
- the review and expansion of Robson rotation
- the introduction of *express voting* and
- new public awareness services such as *Vote Alert, my representatives* and *polling places near you*.



Further innovations and electoral services were developed during Julian Type's term as Electoral Commissioner. In the communications and education area, the TEC developed an ElectionsTas phone app, produced electoral animations, rolled out the electoral education gateway and developed postal vote election kits for schools. In the operations area, the TEC developed new polling place material, procedures and training resources, produced an electronic tally board and developed and implemented the data entry of local government councilor ballot papers.

During Andrew Hawkey's period as the Electoral Commissioner, the Commission has successfully:

- developed a full model and structure for conducting Parliamentary elections without the assistance of the Australian Electoral Commission
- moved to a new office location after 26 years in the Hobart CBD, and
- completed an organisational review which has resulted in an enhanced staffing structure.

The Commission's ability to navigate change and to develop and implement the many efficient innovations in electoral services would not have been possible without the support and guidance of Liz and Christine.

We wish them all the best in the future.

# Appointment of New Deputy Electoral Commissioner



Ngaire Edwards was appointed Deputy Electoral Commissioner on 17 October 2016.

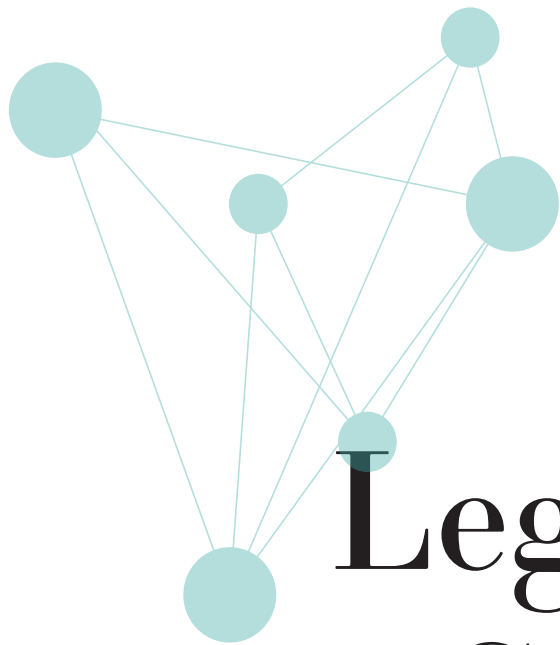
Moving from Tasmania's north-west coast to join the TEC management team, Ngaire brings extensive knowledge and experience as an electoral practitioner in the field. Ngaire commenced as a Divisional Office Clerk with the Australian Electoral Commission (AEC) on 19 July 2010 – the day the 2010 federal election Writs were issued. Ngaire flourished in the role despite this “baptism by fire” and became the Divisional Returning Officer for Braddon in 2012.

Ngaire's achievements include:

- Returning Officer for the division of Braddon for 2 Federal elections and 1 Tasmanian House of Assembly election
- Returning Officer for the division of Montgomery - 2013 Legislative Council elections
- Returning Officer duties for 7 north-west councils - 2014 Local Government elections
- Participant in the AEC's inaugural Rising to Management Program
- Observer of the implementation of Keelty Report recommendations in the 2014 Western Australia Senate election re-run
- Training facilitator of 20 new AEC Divisional Returning Officers - WA Canning By-Election
- National participant in the AEC review of election processes in 2015 which saw the implementation of a raft of new procedures.

Prior to working in the electoral field, Ngaire had a long employment history within government agencies. In the early 1990s Ngaire worked as a travel consultant for Tourism Tasmania in Melbourne and Sydney and then became the TT-Line's Training Officer, responsible for training reservations staff.

While raising young children in the late 1990s and early 2000s, Ngaire spent time on the mainland project managing the restoration of two historic country hotels in Griffith and Tamworth with her builder husband. On returning to Tasmania, Ngaire joined Service Tasmania in 2006 where she worked until her move to electoral administration in 2010.



# Legislative Council Electoral Boundaries Redistribution



As 9 years had passed since the last Legislative Council Redistribution, Her Excellency the Governor appointed the new Redistribution Committee on 24 October 2016. The Committee comprised Electoral Commissioner Andrew Hawkey, Surveyor-General Michael Giudici and the Australian Statistician's nominee Lisa Wardlaw-Kelly.

The Committee published its Initial Proposal on 28 January 2017 and was then succeeded by the Redistribution Tribunal. This proposal included significant boundary changes due to continuous eastward and southward movement of elector numbers over the last 18 years.

The Tribunal, appointed by Her Excellency on 13 December 2016, comprised the 3 Committee members together with Electoral Commission Chairperson Mike Blake, and Member Karen Frost. Following a consultation process in accordance with the Act, the Tribunal published a Further Redistribution Determination on 1 April 2017. After further consultation, the Tribunal then published a Final Redistribution Determination on Saturday 20 May 2017.

The determined boundaries made changes to all electoral boundaries, including the abolition of the north-south traversing divisions of Apsley and Western Tiers. The new boundaries include a north/north-eastern division of McIntyre and an east/south-eastern division of Prosser. A map of the new boundaries and division names is provided in Appendix D.

The Tribunal's next duty under the Act was to determine the transitional arrangements regarding the current members of the Legislative Council. This process commenced with the invitation for public submissions, followed by the conduct of public hearings in relation to transition arrangements, which were held in Hobart and Launceston on 8 and 9 June respectively.

By 30 June, the Tribunal was yet to release its initial transition proposal. While the new boundaries and division names have been determined, they do not come into effect until the transitional arrangements have been determined.

The outcome of the Committee and Tribunal could not have been achieved without the outstanding professional support provided by:

- Executive officer - Michelle Davy
- Research officer - Phil Page
- Web support - Wendy Polzin and Rod Huskins

Full details of the Redistribution can be found at [www.lcredistribution.tas.gov.au](http://www.lcredistribution.tas.gov.au).

# Legislative Council Elections

Launceston,  
Murchison  
+ Rumney



The 2017 Legislative Council elections in the divisions of Launceston, Murchison and Rumney formally commenced with the issue of the writs on Monday 3 April 2017. The TEC appointed Cassandra Ross, Rodney Viney and Graeme Ingram as returning officers for these elections.

When nominations closed at 12 noon on Tuesday 11 April, 14 candidates (6 men and 8 women) had been nominated.

Rosemary Armitage was re-elected as the Member for Launceston, Ruth Forrest was re-elected as the Member for Murchison and Sarah Lovell was elected as the Member for Rumney.

Legislative Council results are provided in Appendix B.

These elections hold extra significance for the TEC as the first elections conducted under our new organisational structure (p 25), and new returning officer structure (p 30). The successful management of these elections is a testament to the professionalism and dedication of all involved.



# Party register

In March 2017 an application was received from the Shooters and Fishers Party Tasmania to change the registered party name to Shooters, Fishers and Farmers Party Tasmania; and to change the ballot paper name from Shooters, Fishers Tas to Shooters, Fishers, Farmers Tas.

The application complied with section 57 of the *Electoral Act 2004* and a notice of the application was required, under section 45 of the Act, to be published in the *Gazette* and the *Mercury*, the *Advocate* and the *Examiner*. The notice provides a 30 day period in which a person may lodge with the Commission an objection to the party name change.

However, with the issue of the writs for the 2017 Legislative Council periodic elections on 3 April 2017, publication of the change of party name notice was deferred until after the return of the writs as required under section 62 of the Act.

A notice of the application was therefore published on 27 May 2017. No objections were lodged by the deadline of 26 June 2017. The Commission is due to meet in early July to formally accept the application.

As at 30 June 2017, the following parties were registered under the *Electoral Act 2004* (alphabetical order):

- Australian Christians
- Australian Labor Party
- The Liberal Party of Australia, Tasmanian Division
- Shooters, Fishers and Farmers Party Tasmania
- Socialist Alliance
- Tasmanian Greens





# Recounts + by-elections

## HOUSE OF ASSEMBLY CASUAL VACANCY

On 4 April 2017, the TEC completed a recount to fill the vacancy in the House of Assembly for the division of Braddon created by the resignation of Bryan Green.

Six candidates nominated for the recount: Benji Benjamin of the National Party, Darryl Bessell, Brenton Best and Shane Broad of the Australian Labor Party, and Philip Nicholas and Paul Basil O'Halloran of the Tasmanian Greens. (Party affiliations are as at March 2014.)

Shane Broad was elected as a member of the House of Assembly for the division of Braddon until the next general election. Details of the recount are provided in Appendix C.

## LOCAL GOVERNMENT CASUAL VACANCIES

During 2016-17, the TEC conducted 4 recounts to fill vacancies that had arisen for the following councils:

- Brighton Council
- Central Coast Council
- King Island Council
- Tasman Council

In addition, three by-elections were conducted for the Central Highlands Council (one mayor and two councillor vacancies).

Full details of all local government elections including recounts and by-elections can be found on the TEC website.



# New offices for the TEC

The expiry of the TEC's lease of the Collins Street Office in November 2016 brought about the opportunity to evaluate the most appropriate space and cost for the TEC for the next five years. Due to a reshuffling of other government offices in preparation for the developments in Parliament Square, the third floor of the TasWater building in Moonah became available.

Prior to the move, the space was modified to provide flexible rooms, fit-for purpose spaces, secure storages and an open-plan office space for permanent staff, equipped with sit-stand desks.

Much of our existing purpose built shelving and other furniture was able to be brought to the new location and used to great effect in the new, flexible spaces for the wide range of functions undertaken across election events.

# Organisational review

Following the recommendations from the Legislative Council Government Administration Committee B inquiry into the TEC and its responsibilities, the Tasmanian Electoral Commission requested the Electoral Commissioner undertake an organisational review of the TEC office structure.

The review identified the following high level risks that exist within the electoral environment:

- the reliance on a small number of experienced and skilled electoral staff to manage a diverse range of elections within Tasmania,
- generational change resulting in low levels of electoral knowledge, experience and expertise in Tasmania and across Australia,
- significant increased scrutiny of and changes to electoral procedures across Australia due to issues arising from the 2013 Western Australian Senate election, and
- an increased reliance on IT systems to provide election services and administration.

The potential risks facing the organisation included the possibility of an unsuccessful Parliamentary election which could result in a major disruption to the Parliament and the administration of the State as well as a significant reduction in public confidence in Tasmania's democratic systems.

The review proposed a new staffing structure that would:

- reduce high operational risks for future election events
- provide staff overlap of knowledge and processes to cover for staff sickness and renewal
- balance staff workloads and pressures
- develop medium and long term corporate knowledge and
- enable succession planning.

The new structure increased the permanent staff from 8.5 FTE to 14 FTE to enable the Commission to manage current and expected future workloads. Additional responsibilities such as party/candidate funding and disclosure, management of general manager rolls for local government elections or implementing new processes for compulsory local government elections would require additional staff resources.

The new structure was signed off by the Department of Justice in December 2016 and all new positions were filled by May 2017. A diagram outlining the new structure is provided in Appendix E.



# Other elections + ballots

During 2016-17, the TEC conducted the following non-parliamentary elections:

## **Statutory elections:**

- Elizabeth Macquarie Irrigation Trust
- Mowbray Swamp Drainage Trust
- Aboriginal Land Council by-elections

## **Industrial ballots:**

- Christian Schools Tasmania
- Hobart City Council
- TasWater

## **Non-Statutory elections:**

- Alcohol, Tobacco and Other Drugs Council
- Cricket Tasmania
- Local Government Association of Tasmania (LGAT)
- Shearwater Country Club Resort Ownership (Tas) Limited
- St Helens R.S.L. Club
- Tasmanian Council of Social Service Inc.
- Tasmanian Pacing Club
- Tasmanian Principals Association
- Tasmanian Rock Lobster Fishermen's Association
- Tasmanian Seafood Industry Council
- Tasmania University Union (TUU)

Fees are charged for these services.



## Assistance to other electoral authorities

The TEC assisted other Australian electoral authorities by issuing pre-poll votes for their elections at the Commission office in Moonah. Votes were issued for the following elections:

Western Australia Electoral Commission -

- State General Election

Australian Capital Territory Electoral Commission -

- ACT Legislative Assembly Election

Northern Territory Electoral Commission -

- NT Legislative Assembly Election





# Innovations 2016-17

# New Satellite Election Office Structure



In 2016-17 the TEC developed a new organisational structure, recruitment and training processes and office infrastructure for Parliamentary election returning officers.

## ORGANISATIONAL STRUCTURE

A new election office organisational structure consists of:

- a returning officer
- an assistant returning officer
- a key election casual
- other election casuals for specific election tasks.

In summary, the returning officer (RO) is responsible for: undertaking his/her statutory duties, handling candidate, party and media inquiries, providing training, overseeing polling place logistics, voting services, counting the votes and declaring the poll.

The assistant returning officer (ARO) is directly responsible for the day to day management of polling place logistics and voting services, to assist with training and provide other assistance to the returning officer. The aim is that AROs from one election can then gain skills to be available as ROs for future events if there is a need.

The key election casual undertakes a more hands on role with large election tasks such as staffing and premise hire and the return of postal votes.





## RECRUITMENT AND TRAINING

To ensure the best frontline management within election offices, the TEC team collaborated to bring together a robust and thorough interview, assessment, training and support regime for the out-posted Returning Officers and their Assistant Returning Officers.

With a state election less than 18 months away, the Deputy Electoral Commissioner and the Operations area undertook an extensive recruitment process to identify possible persons to fill the election office structure roles for the 2017 Legislative Council elections and beyond. The recruitment involved an application process followed up with a paid workshop day in Hobart where applicants were interviewed and assessed on a variety of electoral elements.

Suitable individuals were allocated to the RO and ARO roles for each Legislative Council division going to election.

Training and preparation for their new roles included a week-long face to face training conference, modular manuals, online training and support portals, onsite election expert support over polling weekend and daily group teleconferences.

Following the Legislative Council elections, further applicants were sought. Following the recruitment and assessment process, the RO and ARO roles for the five House of Assembly divisions were allocated. These staff and other key applicants will undertake four days of initial electoral training in July, and further training will be provided in the lead up to the House of Assembly election expected in early 2018.

The implementation of these processes resulted in the formation of highly successful and competent election management teams across the state and will continue for future electoral events.

Between elections, the TEC will continue to invest in the development of these staff to continually expand capability and understanding.





## OFFICE LOCATIONS AND FIT OUT

As there are no set dates for Tasmanian state elections the TEC is always searching for possible physical office spaces across the state that are suitable for election offices.

An additional demand with establishing short term election offices is the roll out of suitable office fittings and IT hardware.

Prior to the 2017 Legislative Council elections the TEC purchased a range of transferable office fittings that were rolled out for the election and can be stored outside of election periods in a storage container situated in Moonah.

## MOVING FORWARD

Following the success of the new structure for the 2017 Legislative Council elections, the Deputy Electoral Commissioner and the operations area have worked tirelessly to ensure that the new structure and fittings are all in place for a State election should it be called any time in 2017-2018.

### Reflections on the experience from some of our new Returning Officers –

*"Roller coaster ride from beginning to end. A great learning experience supported by a wonderful and knowledgeable team from the TEC."*

*"Tremendously satisfying to achieve and contribute to our community."*

*"I have to say, I loved the fact that it was a really great supportive environment that set everyone up to succeed."*



# eLearning for polling staff

The TEC continues to move forward with learning platforms that are modern, accessible, user friendly and portable.

Building on the success of the interactive eLearning course developed last year for our call centre casual staff, the decision was taken to expand our polling place staff training to include an eLearning component.

The Communications and Operations teams have developed an on-line learning portal via the TEC website. Polling officials across all voter services (static polling places, pre-poll, mobile teams etc) are able to log in, learn, review and refresh their understandings prior to face to face training sessions, leading up to polling day or even on polling day to recheck processes such as packaging.

This portal also provides electronic versions of associated polling place manuals together with the well established series of training videos.

Feedback from staff about their training included -

*"The online training was very good"*

*"Manual was easy to understand, online training was simple and relevant and OIC explained things extremely well."*

*"The training received from OIC was a good top up to the eLearning I had undertaken"*



# Postal vote management systems to go online

Postal voting is an integral part of the elector services offered during Parliamentary, Statutory and Non-Statutory elections.

Developed in 2008, the TEC has used its own Postal Voting Management System (PVMS), for issuing and managing return of postal votes for Parliamentary elections since 2009.

A second version of PVMS known as the Municipal Voting Management System (MVMS) was developed in 2012, to manage universal postal vote elections such as local government elections.

PVMS and MVMS were developed in Microsoft Access which contain several limitations, such as requiring a separate instance of the system to be used for each division going to election.

Under the new returning officer organisational structure there is a need to move away from single machine systems on restricted software. A new project was undertaken to develop an online postal vote management system that included the following additional key elements:

- encompasses management of postal voting for parliamentary, local government, statutory and non-statutory elections
- is accessed online from multiple locations
- provides for the storage of multiple elections on a single database
- presents staff with a modern, intuitive interface
- affords the ability to utilise modern methods of communication (SMS and email) with electors
- offers multiple levels of access and the ability to audit the activities of users
- is capable of interfacing with other TEC systems, such as Computer Count and EVMS (Express Vote Management System).

Following a robust tender process, Hobart based software company, Synatec, was awarded the contract. The system should be completed in time to be used at the 2018 State election.



# Redistribution website

A purpose-built website was developed by the TEC communications area, as part of the support provided to the Legislative Council Electoral Boundaries Redistribution.

This is only the second time the TEC has created a dedicated website for a redistribution. Considerations in building the site included being responsive to mobile devices, and effective ways to present large amounts of information and process explanations.

The site presented fresh 'branding' for the 2016-17 Redistribution and included a progressive timetable and navigation whereby information and activities were revealed as each step in the redistribution process occurred.

An important part of the Redistribution process is the opportunity for interested parties to make submissions about each proposal. For the first time, submissions could be made via an online form. Additionally, appointments to meet with the mapping specialist could be made via the online booking service.



# Utilising email for hiring election casual staff and premises

The 2017 Legislative Council elections saw the introduction of paperless staffing and polling place management.

Significant IT upgrades to the TEC election management database now provides capacity for mass email distribution of offers and confirmation of employment and polling place rental agreements. It also enabled a digital copy of completed documentation to be returned to the TEC via email.

This innovation removes the need for paper and mail correspondence for over 1500 employees and 300 polling locations at a State Election, creating marked postage savings and vastly improved timeliness during a period of intense activity.

This technology was expanded to include TEC website links embedded in emails which direct polling place staff to electronic training manuals, further increasing postage and time savings.





# Extending the electronic roll to non-statutory elections

The TEC has a history of embracing technology and innovation. The Tasmanian introduction of electronic election rolls on netbooks in 2010 has seen a major shift in polling day processes and management across Australia.

The use of an electronic roll was expanded into the non-statutory election sphere with netbooks being used for the first time in running the large scale Tasmania University Union student elections. With a member roll of over 26,500, the use of netbooks allowed for more efficient polling, balancing and processing of electors marked on the roll at University of Tasmania locations across the state.

In preparation for the forthcoming State election, the IT team conducted a thorough benchmarking of the 720 netbooks. As part of this process they projected the future needs for polling place and training devices to ensure a robust and adequate fleet of machines moving forward to a statewide House of Assembly elections.

This led to procuring another 250 netbooks to replace a small number of obseleted netbooks and expand capacity.







# Report on Performance 2016-17



# Electoral Enrolment

**TABLE 1: ELECTORAL ENROLMENT 2013 – 2017**

As at 30 June	2013	2014	2015	2016	2017
Tasmanian enrolment (excluding provisional enrolments)	360 889	365 598	366 991	373 911	375 444
Voting eligible population (VEP)	383 232	383 003	385 809	388 456	391 354
Enrolment rate (% of VEP)	94.17%	95.46%	95.12%	96.26%	95.93%

**TABLE 2: HOUSE OF ASSEMBLY ELECTIONS STATISTICS 2002 – 2014**

Election year	2002	2006	2010	2014
Close of roll enrolment	332 473	341 481	357 315	366 442
Ballot papers cast	311 637	324 008	335 353	342 595
Turnout	93.73%	94.88%	93.85%	93.49%
Number of candidates	112	95	89	126
Total number of counts*	2 500	198	194	330
Formal ballot papers	296 470	309 622	320 438	326 163
Informality rate	4.87%	4.44%	4.45%	4.80%
Apparent intentional	6 164	5 723	6 378	8 787
Apparent unintentional	9 003	8 375	8 324	7 435

\*The number of counts fell substantially in 2006 with the adoption of the process of amalgamating parcels of ballot papers with the same transfer value when excluding candidates.

**TABLE 3: LEGISLATIVE COUNCIL ELECTIONS STATISTICS BY DIVISION 2016 – 2017**

Election year	2016		2017		
	Apsley	Elwick	Launceston	Murchison	Rumney
Close of roll enrolment	23 334	25 580	24 270	24 145	27 891
Ballot papers cast	19 623	20 135	20 441	20 392	23 554
Turnout	84.10%	78.71%	84.22%	84.46%	84.45%
Number of candidates	4	3	6	2	6
Formal ballot papers	18 835	19 116	19 695	19 716	22 635
Informality rate	4.02%	5.06%	3.65%	3.32%	3.90%

**TABLE 4: LEGISLATIVE COUNCIL ELECTIONS PARTICIPATION AND INFORMALITY RATES 2013 – 2017**

Election year	2013	2014	2015	2016	2017
Close of roll enrolment	71 576	50 323	73 047	48 914	76 306
Ballot papers cast	60 793	41 897	59 318	39 758	64 387
Turnout	84.93%	83.26%	81.21%	81.28%	84.38%
Informality rate	4.17%	3.91%	5.04%	4.54%	3.64%
Apparent intentional	1 815	1 203	2 180	1 280	1 700
Apparent unintentional	723	437	812	527	641

**TABLE 5: LOCAL GOVERNMENT ELECTIONS STATISTICS 2005 – 2014**

Election year	2005	2007	2009	2011	2014
Close of roll enrolment*	350 026	357 091	362 890	366 906	375 355
Declarations returned	204 846	205 074	201 550	199 153	204 875
Turnout	58.52%	57.43%	55.54%	54.28%	54.58%
Total ballot papers**	563 532	538 411	526 117	510 563	591 180
Number of candidates**	487	444	449	421	716***
Number of counts**	708	602	553	489	1365***
Formal ballot papers**	553 809	528 649	516 524	500 410	574 335
Informality rate	1.73%	1.81%	1.82%	1.99%	2.85%
Apparent intentional	4 702	4 769	4 994	5 471	7 478
Apparent unintentional	5 021	4 943	4 599	4 682	9 367

\* Comprises those electors on the House of Assembly roll for an address within the municipal area as well as other owners, occupiers and company nominees who have enrolled on general managers' rolls.

\*\* Includes all ballot papers for mayor, deputy mayor and councillors.

\*\*\* Increase in number of candidates and number of counts due to the move to "all-in, all-out" elections in 2014.







# Financial Performance 2016-17

This section contains breakdowns of election costs and historical comparisons.

Expenditure and revenue statements can be found in the 2016-17 Department of Justice Annual Report.

**TABLE 6: COST OF HOUSE OF ASSEMBLY ELECTIONS**

Election year	1998	2002	2006	2010	2014
Total cost (\$'000)	1 565	1 752	1 897	2 271	2 743
Number of electors on the roll	322 754	332 473	341 481	357 315	366 442
Cost per elector on the roll	\$5.06	\$5.27	\$5.56	\$6.36	\$7.49

**TABLE 7: COST OF LEGISLATIVE COUNCIL ELECTIONS**

Financial year	2012-13	2013-14	2014-15	2015-16	2016-17
Total cost (\$'000)	544	465	648*	583*	873
Number of electors on the election roll	71 576	50 323	73 047	48 914	76 306
Cost per elector on the roll	\$7.60	\$9.25	\$8.88*	\$12.01*	\$11.47

Periodic Legislative Council elections are conducted annually. Elections for two divisions are held in even-numbered years, and for three divisions in odd-numbered years. Costs per elector are usually higher when two elections are held, due to fixed costs.

In 2015-16, the cost per elector was significantly affected by:

- The Commission's determination of remuneration under section 27(1) of the Act that increased election casual rates to create parity with the Tasmanian public sector.
- The increased complexity and cost of conducting a ballot for the division of Apsley compared to the division of Elwick.

As identified in the 2016 organisational review, the TEC must maintain the capacity and expertise to conduct elections separate to the actual cost of the election. Therefore, as part of the restructure, approximately 26.5% of the salaries of permanent TEC staff are now drawn against Legislative Council elections. Therefore to be able to provide a more accurate comparison between the cost of Federal, House of Assembly, Legislative Council and local government elections, the salaries of permanent TEC are not included in these calculations.

\*Note: These numbers have been adjusted from the last two annual reports as figures in these reports included a proportion of permanent staff salaries.

**TABLE 8: COST OF LOCAL GOVERNMENT ELECTIONS**

Election year	2005	2007	2009	2011	2014
Total cost (\$'000)	1 147	1 211	1 248	1 337	2 098
Number of electors on the roll	350 026	357 091	362 890	366 906	375 355
Cost per elector on the roll	\$3.28	\$3.39	\$3.44	\$3.65	\$5.59*

\*Increase in cost reflects the move to "all-in all-out" elections in 2014.

**TABLE 9: COST OF FEDERAL ELECTIONS**

Election year	2004	2007	2010	2013	2016
Cost per elector on the roll	\$5.79	\$8.36	\$7.68	\$9.48	\$14.28

These figures were obtained from the AEC's 2017 Electoral Pocket Book.

Federal election costs do not include a component for the decentralised structure of permanent divisional returning offices.

**TABLE 10: COST OF MANAGING AND MAINTAINING THE ELECTORAL ROLL**

*This time series has been revised to include costs charged to Tasmania's 29 local government councils.*

Financial year	2012-13	2013-14	2014-15	2015-16	2016-17
Expenditure on roll (\$'000)	418	417	433	413	440
Number of electors on the roll at June 30	360 889	365 598	366 991	373 911	375 444
Cost per elector on the roll	\$1.16	\$1.14	\$1.18	\$1.10	\$1.17

These costs include the cost to the State of the State/Commonwealth joint roll arrangement, communications lines to the national roll management system, associated IT costs and the cost of providing the roll to members of the Tasmanian Parliament, registered parties and other organisations approved by the Commission under section 40 of the *Electoral Act 2004*.



Saturday night processing of integrity paperwork received from polling places



# Appendices

# Appendix A

## APPOINTMENTS

*Electoral Act 2004*

Section no.	Subject	Date approved
Appointments for the 2017 Legislative Council elections.		
93(1)&(2) & 92(4)	Polling places	20/12/16
24(1)	Returning officers	14/03/17
93(1) & (2) & 92(4)	TEC offices as pre-poll polling place	14/03/17
Other appointments		
93(1) & (2)	Interstate & Commonwealth electoral authorities as pre-poll polling places	14/03/17

## APPROVALS

*Electoral Act 2004*

Section no.	Subject	Date approved
44(1)	Application for registration of a political party form	14/03/17
44(1) & (3)	Statutory declaration form – for members of the party applying for to be registered members	14/03/17
77(2)	Legislative Council Nomination form (non-party candidates)	14/03/17
77(2) & (5)	Legislative Council Nomination form (candidate nominated by a registered party)	14/03/17
131	Procedures for Antarctic voting	14/03/17

## DETERMINATION

*Electoral Act 2004*

Section no.	Subject	Date approved
27(1)	Remuneration & allowances payable to returning officers & election officials	20/12/16

## TERMINATION

*Electoral Act 2004*

Section no.	Subject	Date approved
93(3)	Terminate 2 polling places	14/03/17



# Appendix B

## LEGISLATIVE COUNCIL ELECTIONS

### 2017 ELECTION SUMMARY

Issue of the writs	6pm	Monday 3 April
Close of nominations	12 noon	Tuesday 11 April
Polling day	8am - 6pm	Saturday 6 May
Return of the writs		Wednesday 10 May



Division	Retiring Member	Elected candidate
Launceston	Rosemary Armitage	Rosemary Armitage
Murchison	Ruth Forrest	Ruth Forrest
Rumney	Tony Mulder	Sarah Lovell

### PERIODIC CYCLE AS AT 30 JUNE 2017

Periodic Legislative Council elections are held on the first Saturday in May each year.

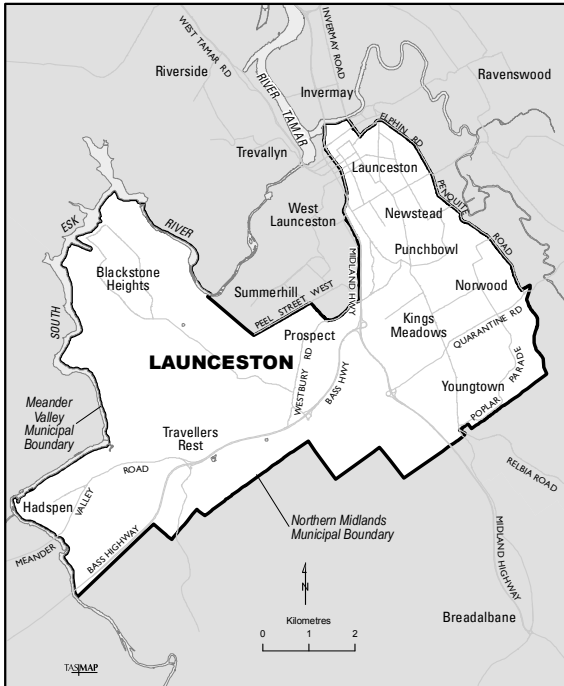
Year	Division	Current Member
2018	Hobart	Rob Valentine
	Western Tiers	Greg Hall
2019	Montgomery	Leonie Hiscutt
	Nelson	Jim Wilkinson
	Pembroke	Vanessa Goodwin
2020	Huon	Robert Armstrong
	Rosevears	Kerry Finch
2021	Derwent	Craig Farrell
	Mersey	Mike Gaffney
	Windermere	Ivan Dean
2022	Apsley	Tania Rattray
	Elwick	Josh Willie
2023	Launceston	Rosemary Armitage
	Murchison	Ruth Forrest
	Rumney	Sarah Lovell

An allocation of current Legislative Council members to the new electoral boundaries will be conducted in the next financial year.

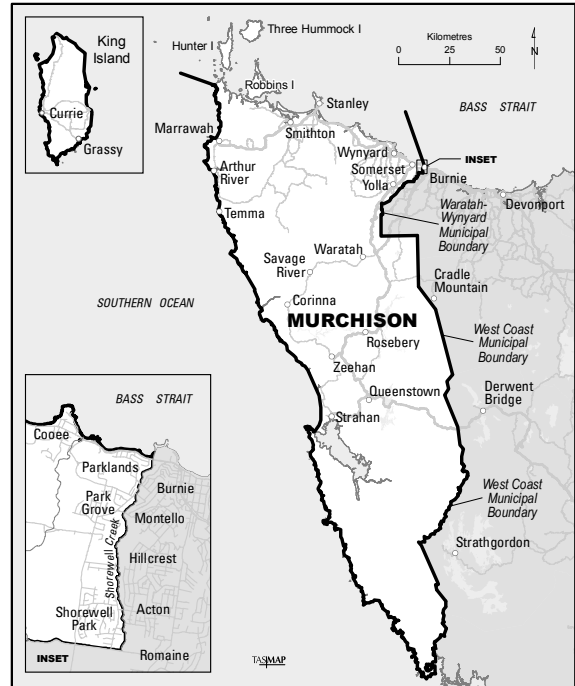
A candidate must obtain an absolute majority of the formal vote to be elected under the preferential voting system used for Legislative Council elections. If no candidate has an absolute majority from first preferences, the candidate with the lowest number of votes is excluded and their votes transferred to remaining candidates. The process of excluding candidates continues until one candidate obtains the required majority.

## DIVISIONAL MAPS FOR THE 2017 LEGISLATIVE COUNCIL PERIODIC ELECTIONS

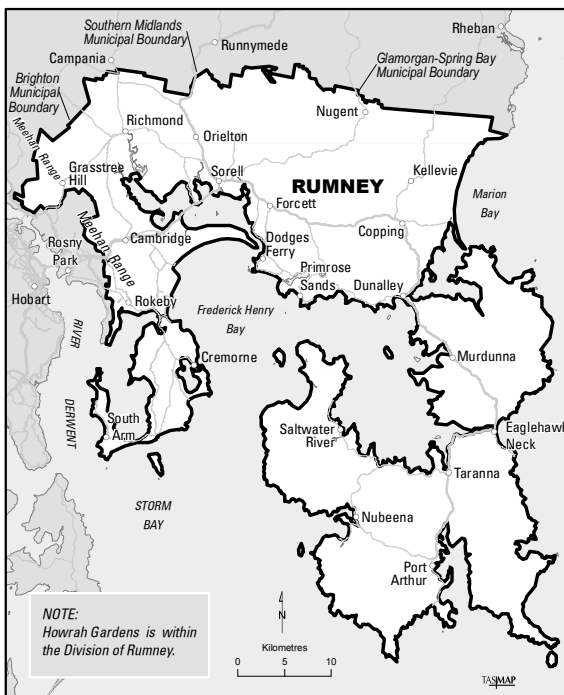
Divisional maps are also available on our website.



4125/09



4125/10



4125/10

# Legislative Council elections results - Launceston

## FIRST PREFERENCE VOTES AND INFORMAL BALLOT PAPERS - BY POLLING PLACE

LAUNCESTON							Total formal votes	Informal	Total ballot papers counted
Polling place	ALLEN, Matthew Shooters & Fishers	ANGLESEY, Emma Tasmanian Greens	ARMITAGE, Rosemary Independent	ELLIS, Neroli Independent	ROE, Brian Australian Labor Party	TAPSELL, Mark Independent			
Agfest	33	20	126	95	39	36	349	20	369
East Launceston	28	138	370	378	96	42	1 052	34	1 086
Five Ways	39	81	315	276	163	68	942	39	981
Hadspen	93	39	357	292	154	144	1 079	53	1 132
Kings Meadows	104	127	618	537	374	167	1 927	89	2 016
Launceston	21	95	170	124	68	26	504	20	524
Launceston Central	22	96	113	121	58	30	440	20	460
Newstead	60	155	476	498	154	87	1 430	45	1 475
Norwood	86	79	695	584	248	136	1 828	81	1 909
Prospect	89	88	583	586	279	180	1 805	80	1 885
Prospect Vale	64	54	367	356	131	127	1 099	56	1 155
South Launceston	22	69	148	123	88	25	475	21	496
Summerhill	51	40	262	250	150	105	858	40	898
Youngtown	64	46	434	325	224	154	1 247	66	1 313
Mobile	22	21	269	227	80	30	649	14	663
<b>Total Ordinary</b>	<b>798</b>	<b>1 148</b>	<b>5 303</b>	<b>4 772</b>	<b>2 306</b>	<b>1 357</b>	<b>15 684</b>	<b>678</b>	<b>16 362</b>
Pre-poll	94	167	949	719	269	169	2 367	43	2 410
Postal	56	97	593	406	228	118	1 498	22	1 520
Provisional	3	4	13	12	1	4	37	1	38
Out of division	1	25	33	29	15	6	109	2	111
<b>TOTALS</b>	<b>952</b>	<b>1 441</b>	<b>6 891</b>	<b>5 938</b>	<b>2 819</b>	<b>1 654</b>	<b>19 695</b>	<b>746</b>	<b>20 441</b>
% Formal vote	4.83%	7.32%	34.99%	30.15%	14.31%	8.40%		3.65% informal	

Election held	6 May 2017	Electors enrolled	24 270
Retiring Member	The Honourable Rosemary Lois Armitage	Electors who voted	20 441 (84.22%)
Returning Officer	Cassandra Ross	Informal votes	746 (3.65%)
Elected member to serve for a six year term until May 2023			

## DISTRIBUTION OF PREFERENCES

<b>LAUNCESTON</b>		<b>ALLEN, Matthew</b> Shooters & Fishers	<b>ANGLESEY, Emma</b> Tasmanian Greens	<b>ARMITAGE, Rosemary</b> Independent	<b>ELLIS, Neroli</b> Independent	<b>ROE, Brian</b> Australian Labor Party	<b>TAPSELL, Mark</b> Independent	Exhausted votes	Formal votes	Absolute majority	Remarks
Count 1	Total votes	952	1 441	6 891	5 938	2 819	1 654		19 695	9 848	First preferences
	Votes transferred	- 952	58	197	206	189	302				Allen excluded
Count 2	Total votes	0	1 499	7 088	6 144	3 008	1 956		19 695	9 848	
	Votes transferred		-1 499	421	547	388	143				Anglesey excluded
Count 3	Total votes		0	7 509	6 691	3 396	2 099		19 695	9 848	
	Votes transferred			906	742	427	-2 099	24			Tapsell excluded
Count 4	Total votes			8 415	7 433	3 823	0	24	19 695	9 836	
	Votes transferred			1 736	1 879	-3 823		208			Roe excluded
Count 5	Total votes			10 151	9 312	0		232	19 695	9 732	
		0.00%	0.00%	52.16%	47.84%	0.00%	0.00%				

**ARMITAGE elected**



# Legislative Council elections results - Murchison

## FIRST PREFERENCE VOTES AND INFORMAL BALLOT PAPERS - BY POLLING PLACE

<b>MURCHISON</b>	FORREST, Ruth Independent	QUILLIAM, Daryl H Independent	Total formal votes	Informal	Total ballot papers counted
Polling place					
Agfest	208	224	432	16	448
Boat Harbour	186	143	329	13	342
Calder	82	53	135	8	143
Cooee	602	412	1 014	59	1 073
Currie	475	158	633	21	654
Edith Creek	67	68	135	10	145
Elliott	168	109	277	13	290
Forest	124	180	304	21	325
Grassy	119	40	159	11	170
Irishtown	102	153	255	16	271
Marrawah	104	94	198	5	203
Moorleah	80	60	140	4	144
Queenstown	442	276	718	30	748
Rocky Cape	153	154	307	6	313
Rosebery	159	103	262	28	290
Savage River	12	23	35	4	39
Shorewell Park	874	583	1 457	66	1 523
Sisters Beach	105	49	154	5	159
Sisters Creek	66	82	148	4	152
Smithton	567	1 019	1 586	32	1 618
Somerset	897	742	1 639	56	1 695
Stanley	204	128	332	5	337
Strahan	196	144	340	13	353
Tullah	41	44	85	7	92

Election held	6 May 2017	Electors enrolled	24 145
Retiring Member	The Honourable Ruth Jane Forrest	Electors who voted	20 392 (84.46%)
Returning Officer	Rodney Viney	Informal votes	676 (3.32%)
Elected member to serve for a six year term until May 2023			

### Murchison first preference votes continued

<b>MURCHISON</b>	FORREST, Ruth Independent	QUILLIAM, Daryl H Independent	Total formal votes	Informal	Total ballot papers counted
Waratah	92	36	128	7	135
Wynyard Central	1 322	815	2 137	55	2 192
Wynyard West	719	472	1 191	45	1 236
Yolla	200	130	330	8	338
Zeehan	205	95	300	17	317
Mobile	198	165	363	10	373
<b>Total Ordinary</b>	<b>8 769</b>	<b>6 754</b>	<b>15 523</b>	<b>595</b>	<b>16 118</b>
Pre-poll	1 449	1 143	2 592	51	2 643
Postal	817	562	1 379	22	1 401
Provisional	21	14	35	0	35
Out of division	121	66	187	8	195
<b>TOTALS</b>	<b>11 177</b>	<b>8 539</b>	<b>19 716</b>	<b>676</b>	<b>20 392</b>
% Formal vote	56.69%	43.31%		3.32% informal	

**FORREST elected**

# Legislative Council elections results - Rumney

## FIRST PREFERENCE VOTES AND INFORMAL BALLOT PAPERS - BY POLLING PLACE

RUMNEY									
Polling place	ARNOL, Cheryl Shooters & Fishers	LOVELL, Sarah Australian Labor Party	MAV, Steve Independent	MULDER, Tony Independent	SHAY, Shelley Independent	THURLEY, Debra Joyce Independent	Total formal votes	Informal	Total ballot papers counted
Agfest	38	92	58	100	20	16	324	14	338
Cambridge	77	521	483	457	123	141	1 802	72	1 874
Clarendon Vale	44	428	80	201	66	56	875	55	930
Copping	27	57	25	54	30	7	200	5	205
Dodges Ferry	151	669	224	592	184	62	1 882	69	1 951
Dunalley	46	144	33	104	34	15	376	19	395
Forcett	53	141	85	126	55	24	484	18	502
Lauderdale	118	788	632	667	184	213	2 602	125	2 727
Midway Point	83	516	259	338	121	43	1 360	52	1 412
Nubeena	49	184	95	117	42	16	503	15	518
Port Arthur	16	29	28	26	5	3	107	3	110
Primrose Sands	27	115	156	76	36	21	431	29	460
Richmond	50	281	222	223	39	41	856	34	890
Rokeby	82	737	159	441	134	93	1 646	76	1 722
Sandford	84	339	294	244	88	89	1 138	74	1 212
Seven Mile Beach	23	245	243	188	43	42	784	30	814
Sorell	195	692	302	575	173	59	1 996	95	2091
South Arm	24	185	118	163	52	62	604	17	621
Taranna	34	97	57	67	27	6	288	15	303
Mobile	5	18	2	19	2	2	48	2	50
<b>Total Ordinary</b>	<b>1 226</b>	<b>6 278</b>	<b>3 555</b>	<b>4 778</b>	<b>1 458</b>	<b>1 011</b>	<b>18 306</b>	<b>819</b>	<b>19 125</b>
Pre-poll	241	857	408	810	231	155	2 702	66	2 768
Postal	139	462	191	455	137	105	1 489	26	1 515
Provisional	5	19	9	11	7	4	55	2	57
Out of division	5	27	16	23	6	6	83	6	89
<b>TOTALS</b>	<b>1 616</b>	<b>7 643</b>	<b>4 179</b>	<b>6 077</b>	<b>1 839</b>	<b>1 281</b>	<b>22 635</b>	<b>919</b>	<b>23 554</b>
% Formal vote	7.14%	33.77%	18.46%	26.85%	8.12%	5.66%		3.90% informal	

Election held	6 May 2017	Electors enrolled	27 891
Retiring Member	The Honourable Tony Mulder	Electors who voted	23 554 (84.45%)
Returning Officer	Graeme Ingram	Informal votes	919 (3.90%)
Elected member to serve for a six year term until May 2023			

## DISTRIBUTION OF PREFERENCES

### RUMNEY

	ARNOL, Cheryl Shooters & Fishers	LOVELL, Sarah Australian Labor Party	MAV, Steve Independent	MULDER, Tony Independent	SHAY, Shelley Independent	THURLEY, Debra Joyce Independent	Exhausted votes	Formal votes	Absolute majority	Remarks
<b>Count 1</b>										
Total votes	1 616	7 643	4 179	6 077	1 839	1 281		22 635	11 318	First preferences
<b>Count 2</b>										
Votes transferred	101	293	223	326	338	-1 281				Thurley excluded
<b>Count 3</b>										
Total votes	1 717	7 936	4 402	6 403	2 177	0		22 635	11 318	
Votes transferred	-1 717	449	360	462	446					Arnol excluded
<b>Count 4</b>										
Total votes	0	8 385	4 762	6 865	2 623			22 635	11 318	
Votes transferred		975	936	641	-2 623		71			Shay excluded
<b>Count 5</b>										
Total votes		9 360	5 698	7 506	0		71	22 635	11 283	
Votes transferred		2 266	-5 698	3 116			316			Mav excluded
Total votes		11 626	0	10 622			387	22 635	11 125	
	0.00%	52.26%	0.00%	47.74%	0.00%	0.00%				

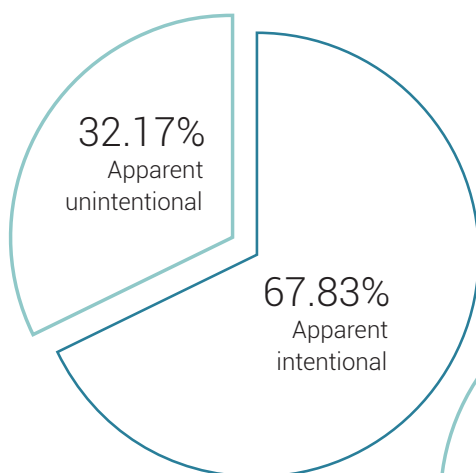
**LOVELL elected**



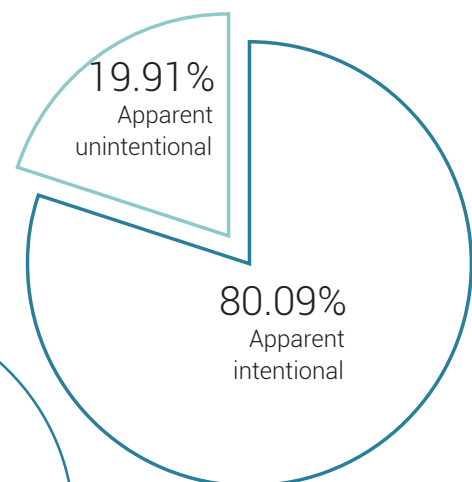
# Legislative Council elections informal ballot paper survey

Apparent intentional informal voting	Launceston	Murchison	Rumney	Total
Blank	214	220	287	721
Deliberate informal or scribble/ messages only	292	238	449	979
<b>Total</b>	<b>506</b>	<b>458</b>	<b>736</b>	<b>1 700</b>
<b>Apparent unintentional informal voting</b>				
Contains writing identifying elector	2	0	2	4
Contains only ticks or crosses	125	190	73	388
No first preference	3	17	9	29
Repetitions or omissions	77	0	82	159
Two or more first preferences	33	11	17	61
<b>Total</b>	<b>240</b>	<b>218</b>	<b>183</b>	<b>641</b>
<b>Total</b>	<b>746</b>	<b>676</b>	<b>919</b>	<b>2 341</b>

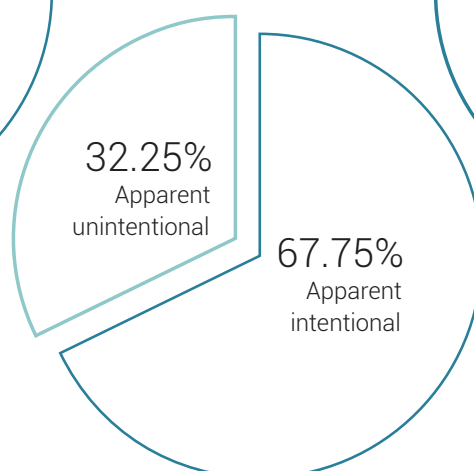
## LAUNCESTON



## RUMNEY



## MURCHISON



# Appendix C

## House of Assembly recount

### GREEN RECOUNT

On 3 and 4 April 2017 a recount was conducted to fill the vacancy in the House of Assembly created by the resignation of Bryan Green on 17 March 2017.

		BRADDON						Exhausted votes	Lost by fraction	Total votes (the quota)	Absolute majority	Remarks
		National Party	Australian Labor Party			Tasmanian Greens						
		Benji BENJAMIN	Daryl BESSELL	Brenton BEST	Shane BROAD	Philip NICHOLAS	Paul Basil O'HALLORAN					
Counts 1-7	Total votes	366	1 296	3 386	4 430	186	692	346	14	10 716	5 186	GREEN's votes distributed
	Votes transferred	11	10	21	14	- 186	75	52	3			NICHOLAS excluded
Counts 8-14	Total votes	377	1 306	3 407	4 444	0	767	398	17	10 716	5 160	
	Votes transferred	- 377	57	95	109		22	88	6			BENJAMIN excluded
Counts 15-21	Total votes	0	1 363	3 502	4 553		789	486	23	10 716	5 116	
	Votes transferred		131	145	372		- 789	138	3			O'HALLORAN excluded
Counts 22-28	Total votes		1 494	3 647	4 925		0	624	26	10 716	5 047	
	Votes transferred		-1 494	351	1 062			83	- 2			BESSELL excluded
Counts 29-35	Total votes		0	3 998	5 987			707	24	10 716	5 005	
			0.0%	0.0%	40.0%	60.0%	0.0%	0.0%				

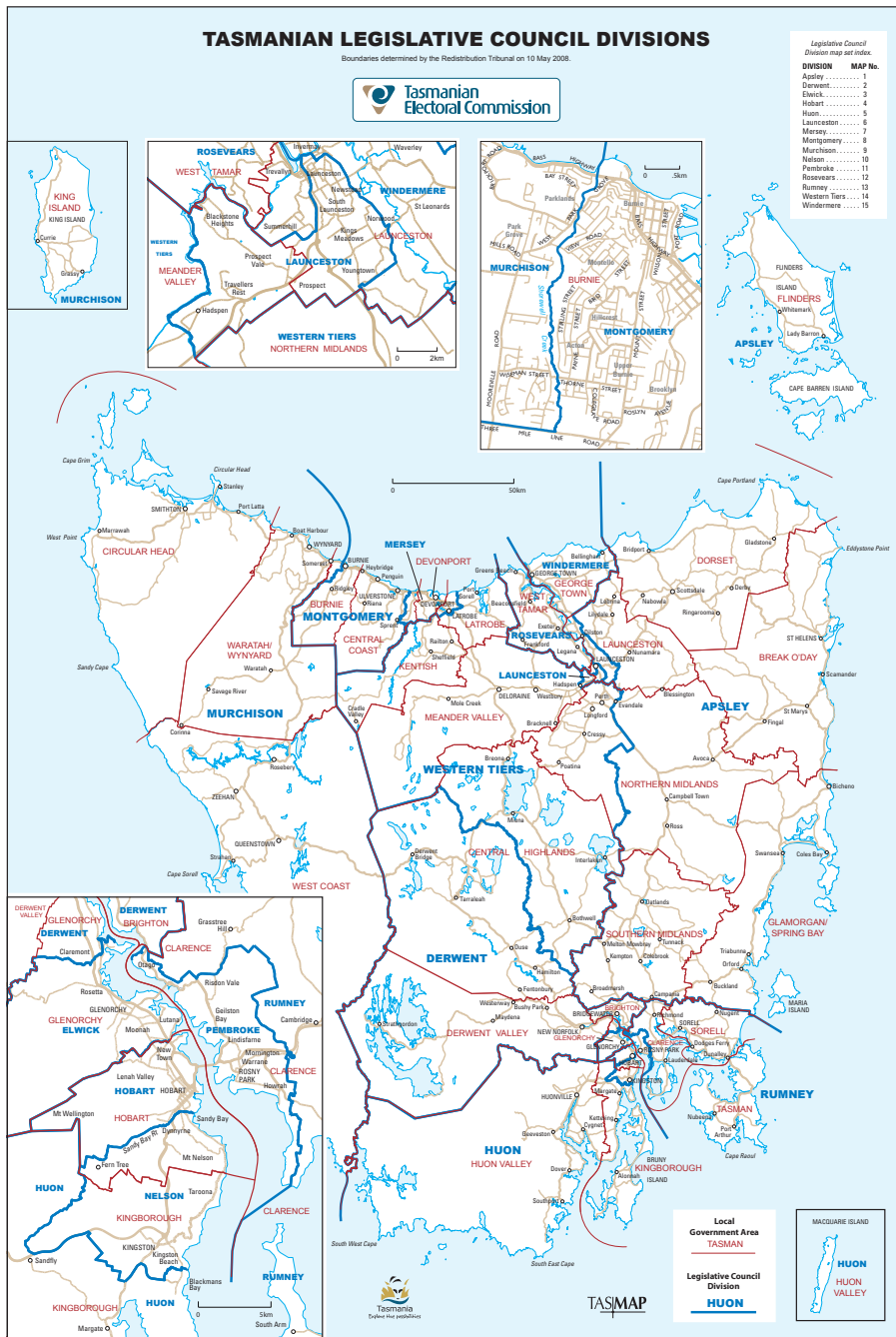
**BROAD elected**

Shane Broad was elected as a Member of the House of Assembly for the division of Braddon until the next general election. (Party affiliations as at March 2014.)

# Appendix D

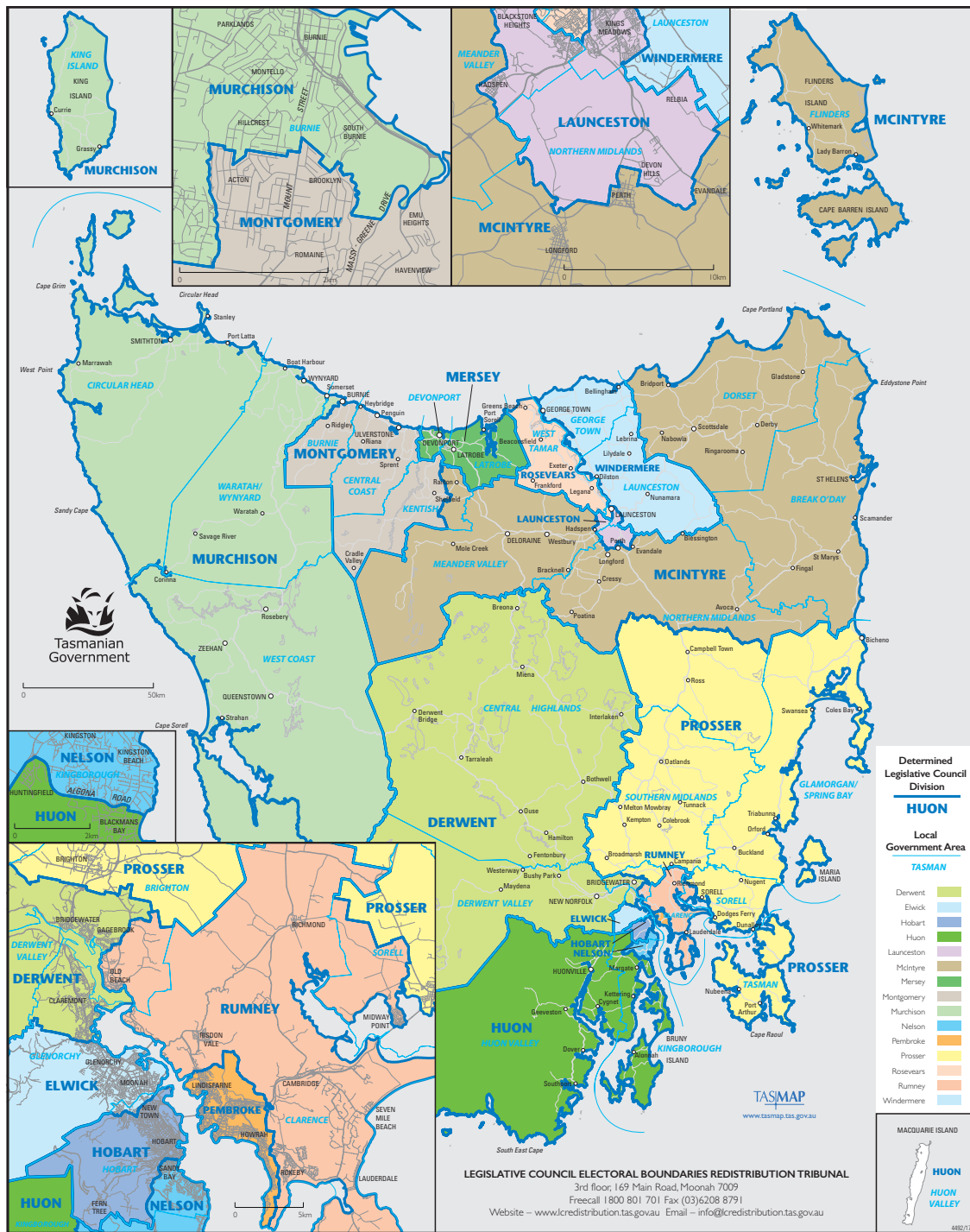
# Legislative Council electoral boundaries

2008 BOUNDARIES DETERMINED BY THE 2008 REDISTRIBUTION



# 2017 BOUNDARIES DETERMINED BY THE 2017 REDISTRIBUTION

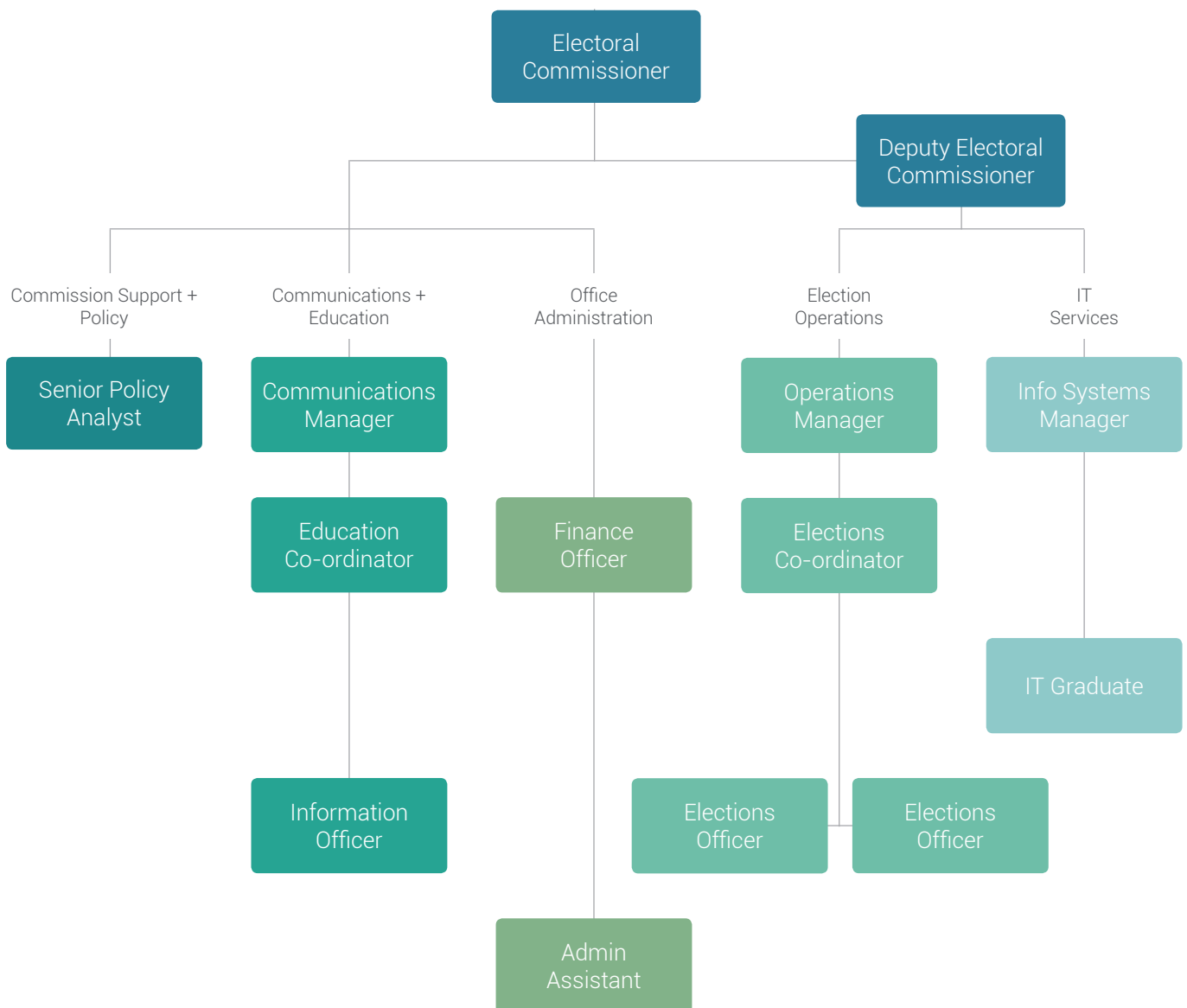
An interactive version of the boundaries can be found at theLIST map - <http://maps.thelist.tas.gov.au/listmap/app/list/map?bookmarkId=201208>





# Appendix E

## New organisational structure





Tasmanian Electoral Commission  
Level 3, 169 Main Road  
Moonah Tasmania 7009

03 6208 8700  
1800 801 709  
Fax 03 6208 8791

[ballot.box@tec.tas.gov.au](mailto:ballot.box@tec.tas.gov.au)  
[www.facebook.com/ElectionsTas](https://www.facebook.com/ElectionsTas)  
[www.tec.tas.gov.au](http://www.tec.tas.gov.au)